

EARTH WEEK

April 16-20



MONDAY, APRIL 16:

Volunteer at Mother Hubbard's Butler Garden

When: 5:00 pm - 7:00 pm

Where: City of Bloomington Butler Park Community Garden

What: Learn about community garden initiatives and how to become involved in Mother Hubbard's campaign to promote food security and help those in need!



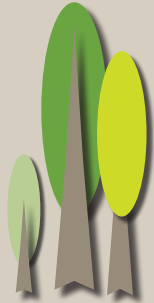
TUESDAY, APRIL 17:

A Conversation with Janet McCabe

When: 6:00 pm - 7:15 pm

Where: SPEA 274

What: The former assistant administrator of the EPA answers questions about environmental politics and policy



WEDNESDAY, APRIL 18:

Beautify SPEA

When: 2:00 pm - 4:00 pm

Where: In the parking lot behind SPEA

What: Take pride in your school and beautify our neighborhood



THURSDAY, APRIL 19:

Tree Planting with the City of Bloomington and Burney Fischer

When: 1:00 pm - 12:30 pm

Where: Intersection of Cottage Grove St and Woodlawn Ave.

What: Work with Prof. Fischer and the City Forester in planting trees in a part of the campus that needs more. Learn about tree care.



SUNDAY, APRIL 22:

Hiking and Canoeing at Griffy Lake

When: 1:00 pm - whenever

Where: Griffy Lake Parking Lot 3595 N Hinkle Road Bloomington

What: Celebrate Earth Day and join EMSDA, NMA, and other SPEA students at Griffy Lake to enjoy the outdoors, paddle around the lake, and unwind in preparation for the end of the semester!

